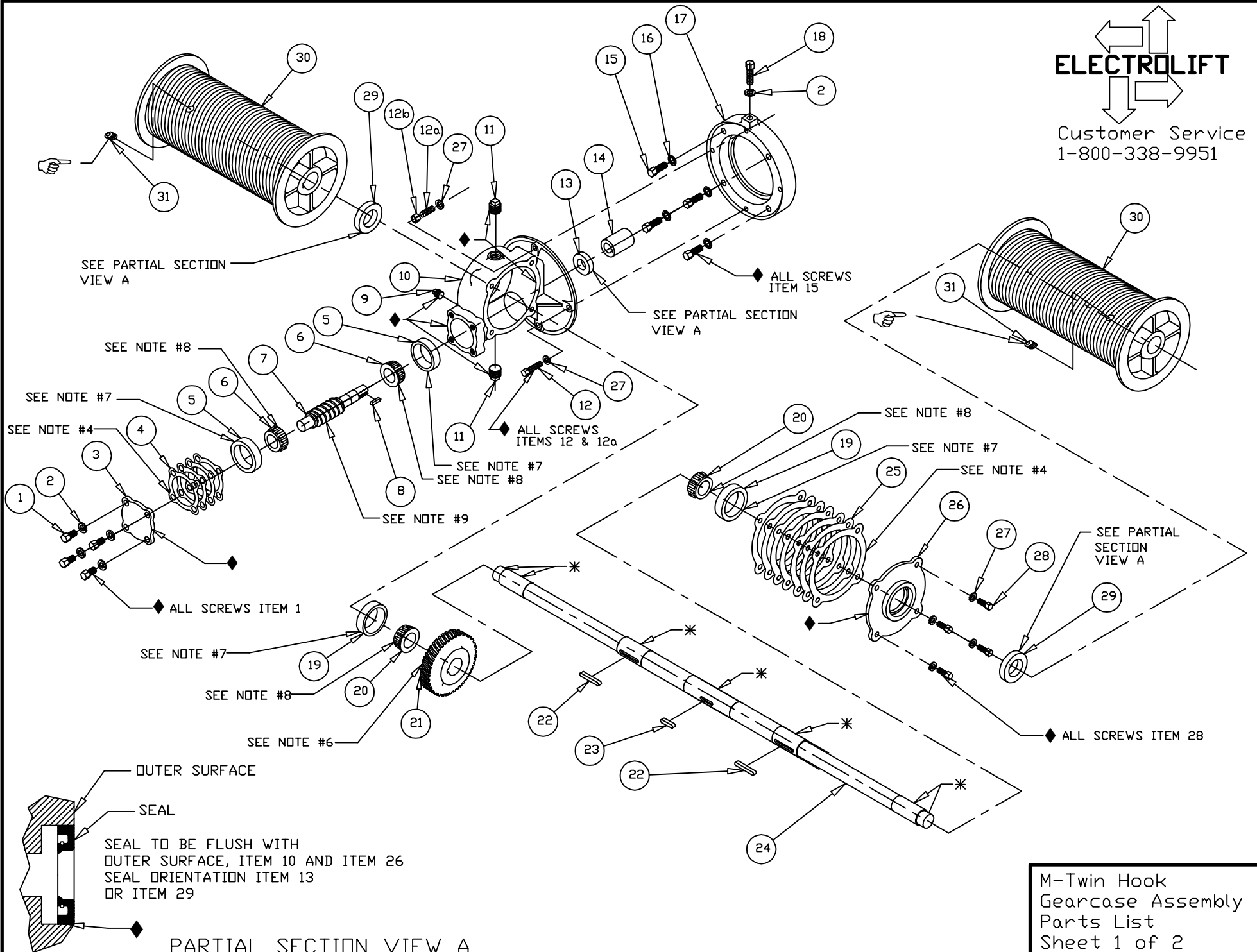


**ELECTROLIFT**  
 Customer Service  
 1-800-338-9951



|        |          |     |  |             |
|--------|----------|-----|--|-------------|
| 31     | FS445    | 2   | SOCKET HEAD SET SCREW 3/8-16x1/2, KNURLED      |             |
| 30     | ----     | 2   | DRUM, JOB SPECIFIC                             |             |
| 29     | DM7035   | 2   | SEAL, SHAFT, 1.25 ID, 2.12 OD                  | ☒SEE NOTE C |
| 28     | FS120    | 4   | SCREW,HHCS,5/16-18x3/4, GR2                    | ☒SEE NOTE A |
| 27     | FS312    | 8   | WASHER,L,5/16, PLAIN                           | ☒SEE NOTE A |
| 26     | K1603P1  | 1   | COVER, SIDE, GEAR CASE, M                      |             |
| 25     | K10751   | 1   | KIT, SHIM, SDT-M, SIDE COVER                   |             |
| 24     | ----     | 1   | DRUM SHAFT, JOB SPECIFIC                       |             |
| 23     | K10846P3 | 1   | KEY, 1/4x1/4, 1-1/8                            |             |
| 22     | K10846P5 | 2   | KEY, 1/4x1/4,1-3/4, M DRUM                     |             |
| 21     | K958A    | 1   | WORM WHEEL, M HOIST AND TROLLEY, 40T, 40:1     |             |
| 20     | DM7213   | 2   | BEARING, TRB, CONE, 1.25 ID                    | ☒SEE NOTE B |
| 19     | DM7214   | 2   | BEARING, TRB, CUP, 2.31 OD                     | ☒SEE NOTE B |
| 18     | FS130    | 1   | SCREW,HHCS,3/8-16x1-1/4, GR2,PLAIN             | ☒SEE NOTE A |
| 17     | K3314    | 1   | ADAPTOR, MOTOR, P-419, M HOIST                 |             |
| 16     | FS317    | 4   | WASHER,INT.TOOTH,3/8,PLATED                    | ☒SEE NOTE A |
| 15     | FS447    | 4   | SCREW,SHCS,3/8-16x1                            | ☒SEE NOTE A |
| 14     | K963     | 1   | SLEEVE, MOTOR SHAFT, M HOIST                   |             |
| 13     | DM7034   | 1   | SEAL, SHAFT, .75 ID, 1.50 OD                   | ☒SEE NOTE C |
| 12b    | FS253    | 1   | NUT,HEX,5/16-18                                | ☒SEE NOTE A |
| 12a    | FS610    | 1   | THREADEDSTUD,FULLY,5/16-18x2                   | ☒SEE NOTE A |
| 12     | FS126    | 3   | SCREW,HHCS,5/16-18x1-1/2, GR2,PLAIN            | ☒SEE NOTE A |
| 11     | FS334    | 2   | PIPEPLUG,1/4,SQHD,STEEL                        | ☒SEE NOTE A |
| 10     | K1603    | 1   | GEAR CASE, M-TH HOIST                          |             |
| 9      | FS336    | 1   | PIPEPLUG,1/8 SQHD,CAST IRON, SOLID             | ☒SEE NOTE A |
| 8      | K10845P3 | 1   | KEY, 3/16x3/16x1-11/16                         |             |
| 7      | K957     | 1   | WORM SHAFT, M HOIST AND TROLLEY, FOR 40T, 40:1 |             |
| 6      | DM7211   | 2   | BEARING, TRB, CONE, .75 ID                     | ☒SEE NOTE B |
| 5      | DM7212   | 2   | BEARING, TRB, CUP, 2.12 OD                     | ☒SEE NOTE B |
| 4      | K10752   | 1   | KIT, SHIM, SDT-M, END COVER                    |             |
| 3      | K960     | 1   | COVER, END, GEAR CASE, M                       |             |
| 2      | FS315    | 5   | WASHER,L,3/8, PLAIN                            | ☒SEE NOTE A |
| 1      | FS466    | 4   | SCREW,HHCS,3/8-16x7/8, GR2,PLAIN               | ☒SEE NOTE A |
| ITEM # | PART #   | QTY | BILL OF MATERIALS/ DESCRIPTION                 |             |

NOTES:

- 1) \* - APPLY ANTISEIZE COMPOUND
- 2) ♦ - APPLY PERMATEX ULTRACOPPER SEALANT
- 3) ☞ - APPLY BLUE TYPE THREADLOCK COMPOUND,
- 4) USE THE SAME AMOUNT AND COLOR OF SHIMS AS ORIGINAL SET.
- 5) OIL CAPACITY 8 OZ. EXXON CYLESSTIC TK680 OR EQUIV. E/L P/N DM7146 MOBIL SHC 634 OR EQUIV. (SYNTHETIC) E/L P/N DM7381
- 6) PRESS ITEM 21 ONTO ITEM 24 CENTRALLY LOCATED ON ITEM 23
- 7) PRESS ITEM INTO MATING HOUSING OR COVER
- 8) TO BE PRESSED ON MATING SHAFT
- 9) TAP WITH MALLET AFTER PRESSING ITEM 6

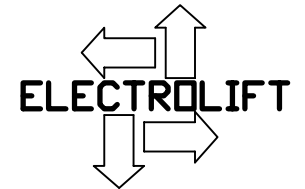
☒ KIT NOTES:

A) THIS PART CAN ONLY BE ORDERED AS PART OF GEARCASE HARDWARE KIT #K11270.

B) THIS PART CAN ONLY BE ORDERED AS PART OF GEARCASE BEARING KIT #K11164.

C) THIS PART CAN ONLY BE ORDERED AS PART OF GEARCASE SEAL KIT #K11166.

D) FOR BOTH SEALS & SHIMS, ORDER SEAL & SHIM KIT #K11283.



Customer Service  
1-800-338-9951

M-Twin Hook  
Gearcase Assembly  
Parts List  
Sheet 2 of 2